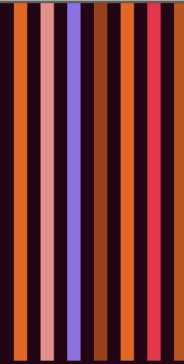
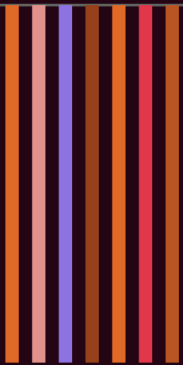




GUESS



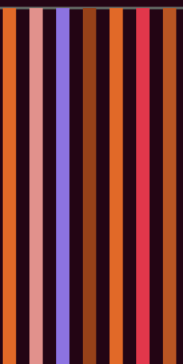
GUESS



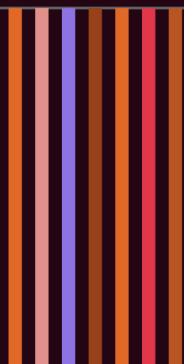
GUESS



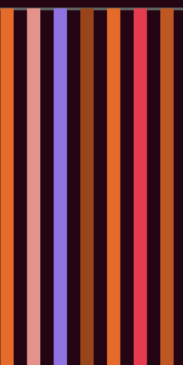
GUESS



GUESS



GUESS



GUESS



GUESS

Jacket

We cannot say:

- Zipper
- White
- Protect

Movements

We cannot say:

- Move
- Forward
- Retreat

Mask

We cannot say:

- Head
- Protect
- Grill

Epee

We cannot say:

- Tip
- Guard
- Grip

Body Cord

We cannot say:

- Connect
- Cable
- Weapon

Poules

We cannot say:

- Aim
- Results
- Victory

Scoring Apparatus

We cannot say:

- Lights
- Bout
- Throw

Glove

We cannot say:

- Hand
- Protect
- Velcro



CHALLENGE



CHALLENGE



CHALLENGE



CHALLENGE



CHALLENGE



CHALLENGE



CHALLENGE



CHALLENGE

With a Chinese cone on the head, perform a complex without letting the cone fall off the head.

With an inverted bench, we must maintain balance while performing two marches, one retreat, and one lunge without falling.

In guard position, with a tennis ball, throw it in the air and manage to clap at least five times without it falling to the ground.

With a weapon, balance a Chinese cone on the first third of the weapon while completing the circuit indicated by the coach, without letting the cone move.

In guard position, balance on one leg for twenty seconds without touching the ground. A squat can be incorporated.

In guard position, pick up a cone from the ground with the tip of the weapon and carry it with movements until placing it inside a container without letting it fall to the ground.

Write the word "march" on your partner's back and get them to guess it.

Stand facing a wall at a distance of one meter, and with a tennis ball, make it bounce off the wall and catch it without letting it fall to the ground at least three times.



ASK



ASK



ASK



ASK



ASK



ASK



ASK



ASK

The only sport of Spanish origin is:

- Fencing
- Football
- Equestrianism
- Petanque

How many sports weapons exist in fencing:

- One
- Three
- Two
- Four

The bout in a direct elimination must last:

- Three minutes
- Nine minutes
- Six minutes
- Ten minutes

A red card is penalized with:

- One point against
- A warning
- Expulsion from the tournament
- Two points against

When we perform an action to defend ourselves from the opponent, we are making:

- A parry
- A response
- A line
- A lunge

Fencing is a sport of:

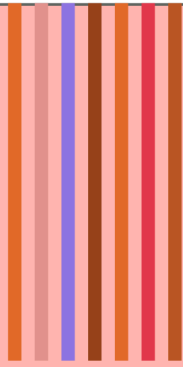
- Fighting
- Combat
- Divided court
- Team

The official color used in fencing is:

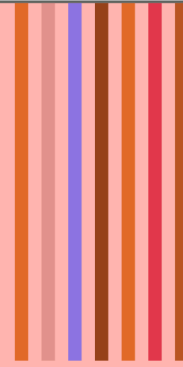
- White.

What does the referee say when starting a bout or a new touch?

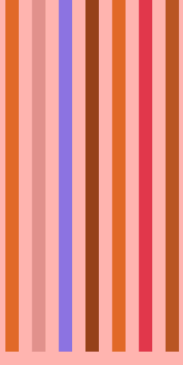
- Ready, set, go
- On guard, ready, go
- Ready, on guard, go



MIMIC



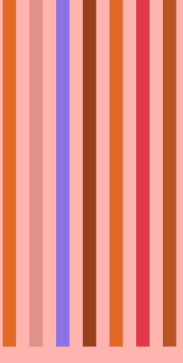
MIMIC



MIMIC



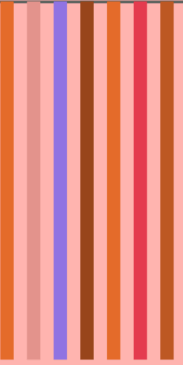
MIMIC



MIMIC




MIMIC




MIMIC



MIMIC



PLASTRON EXERCISES



CONNECTING TO THE PISTE



SALUTING AT THE START
OF THE BOUT



SHAKING HANDS AT
THE END OF THE
MATCH



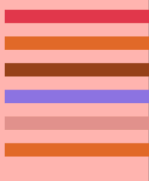
EQUIPPING TO
PERFORM A MATCH



FIXING THE
WEAPONS



DRINKING
WATER



PERFORMING THE
WARM-UP

